

THE STARTER PACK

31 **AMAZON**
ST **CUB SCOUTS**

WELCOME TO CUBS



We would like to welcome you to the 31st Itchen North Amazon Cub Scouts and introduce ourselves:

Vicki Berry (Keego/Akela), our Cub Scout Leader. Hayley Smart (Kaa), Adrian Palmer (Rikki-Tikki-Tavi), Heather Pundsack (Mrs Chil) & Mark Pundsack (Chil) as Assistant Cub Scout Leaders. Nicki Clarkson (Ikki) & Abbie Pundsack (Squirrel) as our Cub Scout Section Assistants.

The 31st Itchen North Amazon Sea Scout Group, are part of the Itchen North District. We take boys and girls, from Scouting backgrounds or not, from all parts of the District and County. The age range is 8 – 10½.

The Troop's regular meeting time is 7.00 pm – 8.30 pm on Thursday evenings, at The Norman Rodaway Pavilion, Hedge End – however being a Sea Scout Group, we are often out and about, meeting at other times and places.

As a new starter, you are welcome to attend meetings for a few weeks to see whether you will enjoy it. Once you have decided to join you will need to obtain a uniform, start paying a subscription and participate in an investiture ceremony.

The subscriptions (which are reviewed each year) are £13 each calendar month and payments are to be made using online banking, as it keeps things simple and spreads the costs. Other than subs, payments for other optional events or activities may occur throughout the year.

The Troop is split between four Sixes. These are Green, Red, Yellow and White. Each Six has a Sixer and a Secunder.

This pack contains pages about:

- [General Information](#)
- [Formal Uniform details](#)
- [Activity Kit details](#)
- [Additional Information](#)
- [Equipment & Chief Scout Silver Award](#)

Personal details and the Gift Aid Declaration are completed using Online Scout Manager (OSM).

Thanks, and I hope you enjoy your time with the Group!
Yours in Scouting, 31st Itchen North Amazon Cub Scout Leaders

Email: cubs@amazonseascouts.org.uk

Website: <https://amazonseascouts.org.uk>

Facebook: <https://www.facebook.com/31stItchenNorth> - <https://www.facebook.com/groups/31stItchenNorthCubs/>

GENERAL INFORMATION



The Purpose of Scouting

The purpose of Scouting is to contribute to the development of young people in achieving their full physical, intellectual, social and spiritual potentials, as individuals, as responsible citizens and as members of their local, national and international communities.

The Scout Method

Scouting uses a method, in which young people, in partnership with adults, enjoy what they are doing, learn from doing, participate in varied progressive activities, make choices for themselves, take responsibility for their own actions, work in groups, take increasing responsibility for others, taking part in outdoor activities, sharing in faith activities, and making and living out their Cub Scout promise and Cub Scout law.

How Do We Do This

By offering good quality Scouting and training; underpinned by the structure, fundamentals and rules of the Scout Association as outlined above.

How Our Group Is Made Up

Beaver Scout Colony core age 6 – 8
Cub Scout Pack core age 8 – 10½
Sea Scout Troop core age 10½ – 14½
Explorer Sea Scout Unit core age 14 – 18

The Group Council

All parents are automatically members of the Group Council, once their child is invested into the Scout Group. As with all voluntary organisations, we rely heavily on fundraising to enable the Scouting activity to be maintained and developed. You will be asked occasionally to help and support these fundraising initiatives, making it possible for your child to get the most from Scouting.

Subscriptions

Subscriptions (reviewed each year) are paid each term directly to the Group Treasurer, who then passes on a proportion of the money to each section. The retained money is used by the Group Executive Committee for the running costs of the Group, i.e. insurance, capitation fees, equipment etc.

Capitation

This is a fee that every uniformed member has to pay each year to the Scout Association. It is broken down into three parts; the majority of the money goes to Headquarters and covers the national running costs, the provision of insurance and legal requirements. The second part goes to Hampshire County Scouts.

Our Leaders

All our uniformed Leaders are required to attend formal training courses and complete training plans to assist in running the Cub section effectively for the benefit of the young people. They will be required to undertake Child Protection training and a First Aid course. Leaders taking Cubs on camps and expeditions will also have undertaken specialist training before obtaining the necessary permits for such activities, this is the same for Leaders instructing Cubs on the water.

All uniformed, and non-uniformed Leaders and helpers are vetted and will have completed a Disclosure and Barring Service (DBS) check. This ensures that they are fit to be entrusted with the care of our members. Certificates are issued and renewed every five years.

GENERAL INFORMATION



The Executive Committee

Our Group Executive – consists of a Chairman, Secretary, Treasurer, The Group Scout Leader, Assistant Group Scout Leader and a Parent Representative from each section. The Group Executive Committee meets regularly and its responsibilities include management of group property, fundraising and the management of group finance.

OSM (Online Scout Manager)

OSM is a secure electronic management system which can be used by Leaders, parents & Cubs. OSM is used to manage each of the sections in the Group. On joining you will be invited to use the system where you will need to create an account. OSM will allow you access to update your Cub's personal information, follow their badge progress and review the Cub Programme and upcoming events. Once in the system, you will receive notifications and reminders of upcoming events via email. We do suggest you log on and check for changes in the programme on a regular basis.

Cub's Personal Mobile Phone Number and Email Address

The Scout Association allows us to keep copies of Cub's personal mobile numbers and email addresses. This is useful for general communication, especially during scouting events/activities such as expeditions, wide games, and hikes. With an email, the Cub will also be able to log in to OSM.

Remembrance Day Parade

Unlike some groups, we do not ask our members to attend a Church Parade regularly, but we do ask for compulsory attendance at the Remembrance Day Parade in November. Membership of our group means that for one day a year, all other activities such as football or rugby are to be put aside for children and adult members alike.

Help

We are a registered charity and as such help is required during the year with transport, activities and fundraising, all vital for the successful running of the group. Please do not leave it to the few, remember - many hands make light work! Our social events and bag-packing sessions are an important part of our fundraising and it is expected that the parents and Cubs play a major role in helping with these. We ask that each Cub helps with at least two fundraising events a year. Please do not leave this to our Leaders who already give up a huge amount of their own time for your children. We are also constantly seeking people to come along and help us at meetings, both on a casual basis and as uniformed Leaders. If you can help, please contact the section Leader. The Scout group is a voluntary association without which we could not operate, we are always actively seeking additional volunteers in various capacities, if parents have an interesting hobby or skill set it is always useful to know as the group could make use of it.

FORMAL UNIFORM

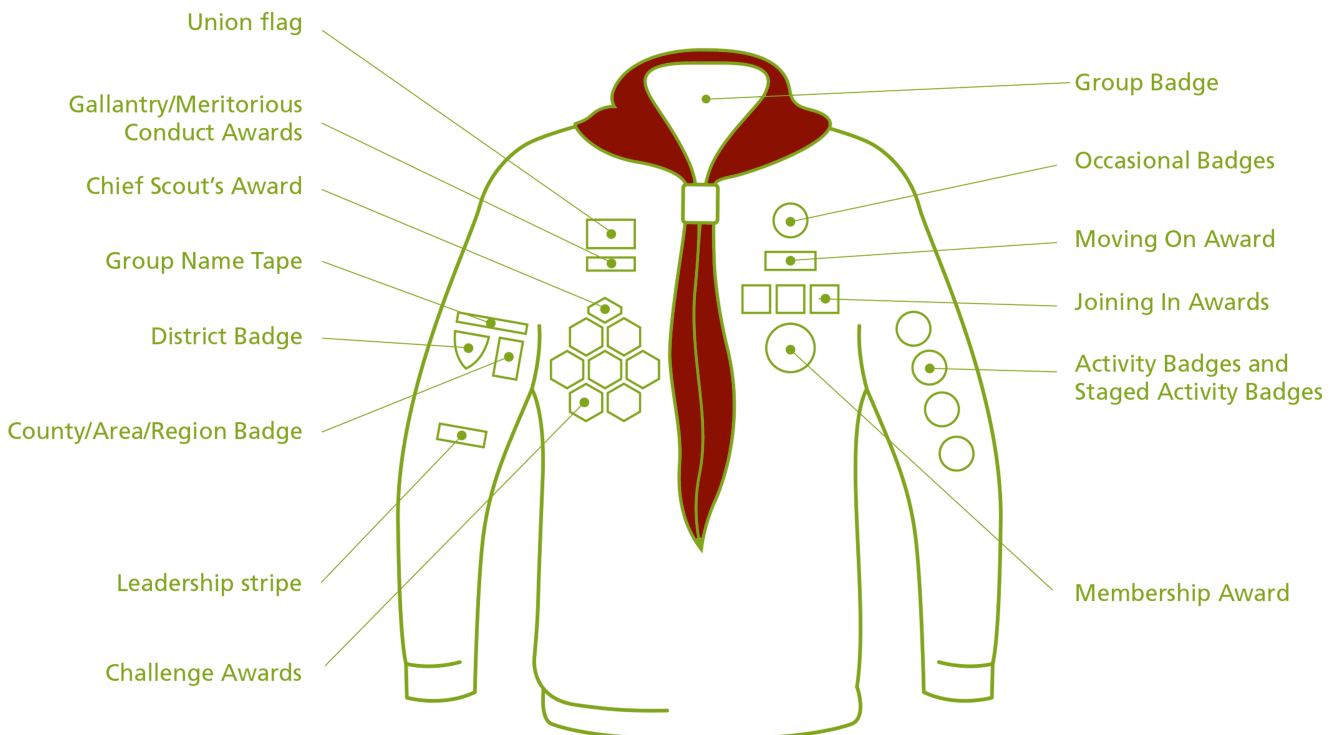


An Amazon Cub Scout uniform consists of a Green Cub jumper, dark red and navy blue necker, either a Cub polo shirt or activity kit t-shirt and dark trousers/tracksuit bottoms.

The jumper and t-shirt will need to be purchased by the Cub (or the Bank of Mum and Dad). Occasionally we may hold second-hand jumpers/hats at a reasonable price; please ask a Leader for information. At the investiture, the Cub will be supplied by the Cub Troop with the initial badges and necker.

Cub jumpers are available from the Eastleigh District Scout Shop. The shop is only open on Thursdays 6 pm-8 pm & Saturdays 2 pm-4 pm. Call 08456 445253 for more information or visit: <http://14theastleighscouts.scoutsites.org.uk/our-group-shop/>, alternately purchase online from <http://shop.scouts.org.uk/>. See the Activity Kit page for t-shirt details.

The picture below shows where your badges go:



ACTIVITY KIT



The 31st Scout Group offers all sections the opportunity to purchase an Activity kit. The activity kit is normally worn when the Smart Uniform is inappropriate such as engaging in outdoor activities. Hoodies are optional though T-Shirts are a compulsory part of the uniform.

Orders can be placed directly with Lawson-HIS, we would recommend not having the transfers applied until you have checked the garment for size (clothing cannot be exchanged once transfers are applied).

Please phone ahead to arrange orders & collection, prices will vary over time so please check when ordering. Make sure to specify what section you are a part of when ordering logo transfers.

Contact: Julie or Lindsey at Lawson-HIS

Unit 1, Itchen House, 184 Empress Road, Southampton, SO14 0JY

Open 8.00 – 5.00 pm Mon - Fri 8.30 – 12.30 pm Saturday.

Email: clothing@lawson-his.co.uk **Telephone:** 02380 724766



Size Guide: Youth sizes can come up a bit small; buy larger sizes to give plenty of room to grow.

Description	CODE / Colour	Cost*	Age (Size)
Youth Soft-Style T-Shirt	64000B Navy	£6.28	XS / S / M / L / XL
Youth Full Zip Hoodie	18600B Navy	£14.45	XS / S / M / L / XL
Adult Soft-Style T-Shirt	64000 Navy	£7.57	S / M / L / XL / 2XL / 3XL / 4XL / 5XL
Adult Full Zip Hoodie	18600 Navy	£18.06	S / M / L / XL / 2XL / 3XL / 4XL / 5XL

*Pricing approximated as of September 2021 (subject to change at any time), estimated prices include logo transfers and VAT where applicable.

The above Product codes include a link to the website to check the sizes

ADDITIONAL INFORMATION



Additional Activities/Events/Camps

We will at times arrange other events which could incur additional costs. We will always endeavour to keep these fees to a minimum, should anyone have difficulty with payment (Subs or Events) please discuss it with a Leader.

Payments

Monthly subscriptions are paid into the Group Account. Payment for additional events/activities/camps will normally be paid directly into the Cub Section Account (details will be provided). Whilst we will take payment by cheque, we do prefer payment by BACS transfer please (this simplifies payment for our Leaders).

Drop Off

Before leaving please ensure that we have more than one leader present & confirm the activity is going ahead as planned; there is the slight chance of last-minute cancellations due to insufficient Leader cover or where conditions dictate a potential risk to the wellbeing of the Cubs (especially boating).

Collection

Please try to collect on time and vacate your vehicle by coming to us. It may be that we overrun & you are waiting for your Cub, unfortunately this does happen. If you know in advance you cannot arrive at the correct time/or collect promptly then please let us know. If we are not aware then we may already have started the activities which could result in the Cub being too late to be included.

Medication

It is important that we understand the medical history of each Cub; this information is stored in OSM which should be updated regularly by parents/guardians. An inappropriate kit or missing medication (such as inhalers) may exclude the Cub from the Activity.

Store Discounts

Cubs can receive additional discounts at certain outdoor stores (we suggest you take along your necker as evidence). An example of stores are 'Cotswolds' and 'Go-Outdoors'.

Water Based Activities

As a Sea Scout group, we participate in many water-related activities and must comply with scouting policies to ensure the safety of all participants. As such we need to know if there are any conditions that may have an impact on participation. Cubs must be able to swim a minimum of 50 metres in light clothing (shorts/t-shirt) and tread water for 5 minutes; we will perform our own assessments.

EQUIPMENT & CHIEF SCOUT SILVER AWARD

Indoors Equipment

Cub smart uniform is required at each session unless you are informed otherwise. We do have regular uniform inspections; having items missing, badges not sewn on or a scruffy Necker, will all impact on points for the Cub's Six.

Outdoors Equipment

Cubs are expected to come prepared for the activity and weather conditions, warm clothes when cold, waterproof clothing when wet, sun hats and cream when hot. Footwear should be close-toed and suitable for the activity. A drink or snack may be necessary depending on the activity.

Chief Scout Silver Award

We encourage the Cubs to progress towards their Chief Scout Silver Award (this is a great achievement). It is not possible for everything to be achieved on 'Cub nights' only, some items must be completed during additional camps or events, and likewise, there are components that can be completed at home or school (we will require evidence before signing off).

